

HEALING ARTS

Lobby art – self-guided tour information

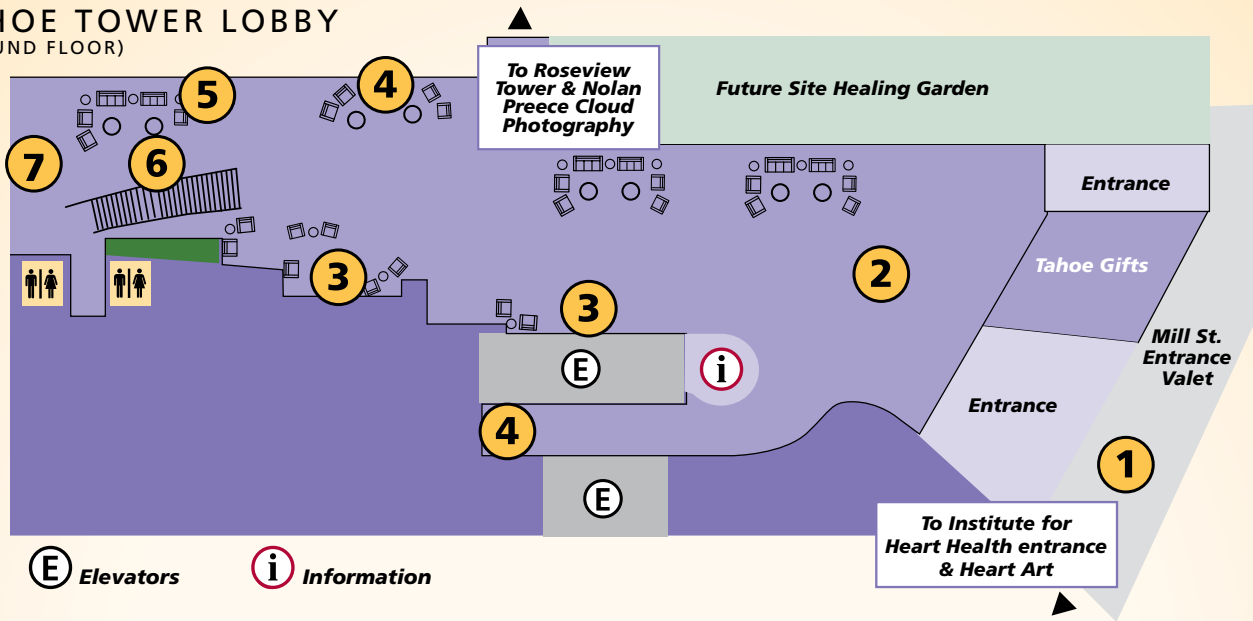


David Kessler | *Night Fall Drift*

“Health care organizations are increasingly using the arts to enhance quality of care. At a time when hospital stays are shorter and healthcare staff serve patients with a higher level of acute care, the arts help create a human environment.”

-Paul Schyve, M.D., Senior Vice President
Joint Commission on Accreditation of Healthcare Organizations

TAHOE TOWER LOBBY (GROUND FLOOR)



1 Matt Gil

Water Spout #2, aluminum & paint, 9'x36"x18"
Heart, aluminum & paint, 6'x44"x24"
No Math, aluminum & paint, 9'6"x4'4"x24"
Optimater #2, aluminum & paint, 12'x36"x24"
 Matt Gil seeks out simple but powerful subjects for his metal sculptures. His sculpture seeks a balance between the form and negative space and creates a force that gives life to his intricate works.



2 Richard Altman and Lyle London

Triple Helix, diachronic glass and stainless steel, 15'x8'x8' (artist rendering)
 This suspended sculpture was created by artists Lyle London and Richard Altman. Stainless steel helical forms wind around each other creating a structure similar to the spiral intertwining of amino acid based in living DNA, the core structure of life itself.



3 Catherine Courtenaye

Bird Series, oil on panel, 18"x18" each (detail)
 By deconstructing handwriting artifacts mined from Victorian era workbooks and adding layers of saturated colors, Catherine Courtenaye gives her paintings a sense of historical time. By obscuring the original clarity of these carefully controlled strokes, they are reanimated and achieve a new sense of expressiveness.



4 David Kessler

Blossom Drift, acrylic on aluminum, 72"x48" (detail)
Sunrise Shimmer, acrylic on aluminum, 16'x20'
 David Kessler uses water surfaces to explore the nature of movement, light, and simulation in his paintings, employing a variety of techniques to create a startling realism.



5 Dale Livezey

Blue Voice on Air, oil on linen, 48"x60"
 Artist Dale Livezey captures the intensities of color found at dawn and dusk. His landscapes, which feature the abstract qualities of shadows, evoke contemplation and provide opportunities for reflection.



6 Richard Altman and Lyle London

Double Helix, diachronic glass & stainless steel, 7'x5' (detail, artist rendering)
 This suspended sculpture was created by artists Lyle London and Richard Altman. Stainless steel helical forms wind around each other creating a structure similar to the spiral intertwining of amino acid based in living DNA, the core structure of life itself.



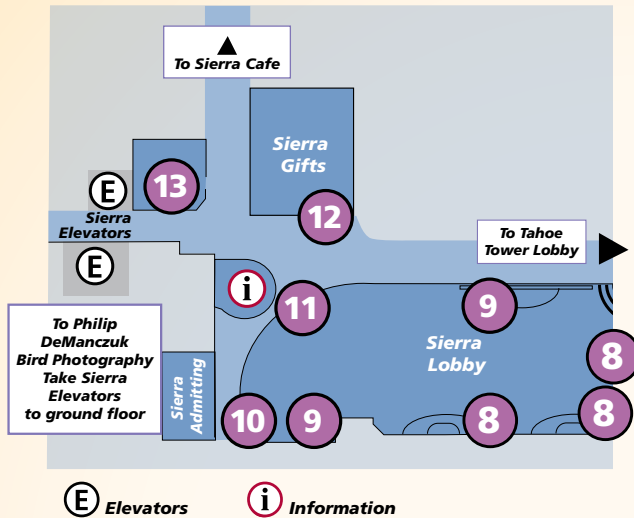
7 Laddie John Dill

Untitled 29, oxides, glass & metal, 72"x36" (detail)
 Laddie John Dill uses indigenous minerals and oxidation processes to create organic, geometric paintings and sculptures defined by space and architecture.

If you have time:

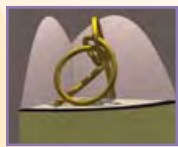
We also feature artwork in the elevator bays of the Tahoe Tower. To see these pieces, take the Tahoe Elevators to the following floors: Ground, 1, 2, 3, 4, and 6.

SIERRA TOWER LOBBY (FIRST FLOOR)



8 Sidne Teske

Tuscarora, soft pastel, 10"x14" (detail)
Barbara's Thaw, soft pastel, 10"x13½"
Rocky Bench, soft pastel, 17½"x24½"
Early Spring, Old Barn, soft pastel, 9½"x11½"
Cliff Light, soft pastel, 9½"x11½"
Early Evening, Pistol Creek, soft pastel, 10"x12"
 Exploring the vast empty stretches of the Great Basin in her truck/art studio, Sidne Teske paints to share her passion for the wide-open high desert landscapes. Her works are vibrant and seem to tremble with subtle movement.



9 Roger Berry

OTA, silicon bronze with patina, 117"x50"x42"
LOBO, silicon bronze with patina, 35"x48"x46"
 Roger Berry explores the physical experience of sculpture rather than what it may represent. The viewer feels the piece rather than simply seeing it, experiencing the forces of gravity, energy and tension in the moment between balancing and toppling.



10 Joseph Bellacera

August Bloom, oil on paper, 26"x24" (detail)
Soft Summer Day, oil on paper, 26"x24"
 Change and fluidity are the true subjects of Joseph Bellacera's landscape paintings. His landscapes hover on the edge of abstraction and have a sense of immediacy and movement that reflects the ever-changing nature of the fields and wetlands he paints.



11 Barry Entner

Diver, cast glass, 60"x12"x10" (detail)
 Diver is hot poured glass into a steel to wood mold and then kiln cast. According to artist Barry Entner "Diver is immersion into our primal past, inescapable and ever critical."



12 Sue Coleman

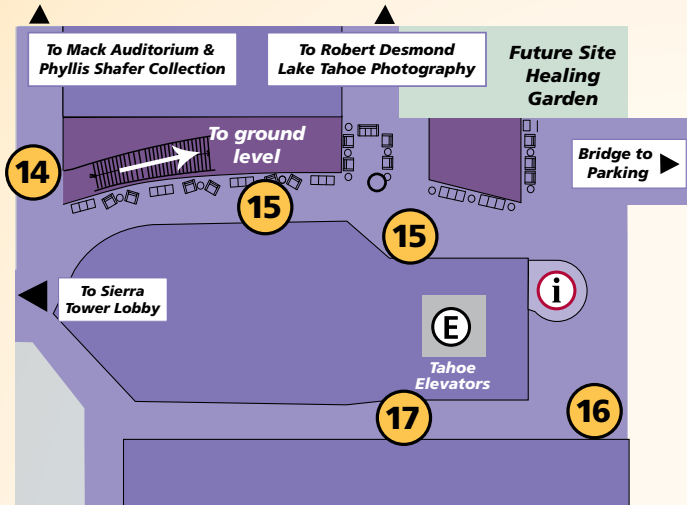
Biccosh Washo Cradleboard
Willow Tray
Degikup (round basket)
 One of only a handful of basket weavers remaining from the Washo tribe, Sue Coleman harvests willow and prepares it for weaving just as her grandmother did. Her intricate baskets are made using techniques passed down through generations and take anywhere from a few days to several months to create.



13 Bill Braun

Mountain Meadow Magic, acrylic on canvas, 24"x54" (detail)
Sweet Sunflower Song, acrylic on canvas, 32"x24"
 Continuing the long tradition of trompe l'oeil painting, Bill Braun's motive is to trick the viewer's eye into believing that what they are seeing is indeed real. His subjects are rendered in true scale and give a striking sense of realism.

TAHOE TOWER LOBBY (FIRST FLOOR)



- 14 Maurice Nespore**
Osmosis 2, collage on panel, 80"x108" (detail)
Known for richly textured pastel landscapes, Maurice Nespore's work is textured and multi-dimensional, allowing the viewer to examine the surface while experiencing a continual range of movement and depth.



- 15 Laddie John Dill**
Mineral Migration, oxides, glass & metal, 21' (detail)
Chromatic Flight, oxides, glass & metal, 25'
Laddie John Dill uses indigenous minerals and oxidation processes to create organic, geometric paintings and sculptures defined by space and architecture.



- 16 Phyllis Shafer**
Truckee Cradle, oil on canvas, 36"x48" (detail)
Painting directly from the natural environment, Phyllis Shafer looks to show her subjects in a singular, raw moment, allowing the viewer to see the inner spirit of the landscapes in her work.



- 17 David Kessler**
Twilight Surface, acrylic on aluminum, 48"x72" (detail)
David Kessler uses water surfaces to explore the nature of movement, light, and simulation in his paintings, which employ a variety of techniques and methods to give his images a startling realism.

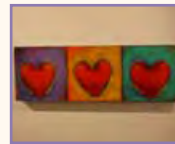
HEART ART

Renown Institute for Heart Health

From the Tahoe Tower Lobby (ground floor) street entrance, go just west of the Mill Street entrance. Stop by and see the hearts that have been created by several noted artists.



Matt Gil
Heart (artist rendering)



Dave Newman
3 Hearts



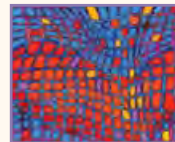
Stephanie St. Thomas
Serenity (detail)



Mary Lee Fulkerson
Heart Basket



Anna Choi
Heart Vase (detail)



Gloria Montgomery
Heart Full 3 (detail)

TO SPONSOR

To donate or help with the Healing Arts Program at Renown Regional, please contact the Renown Health Foundation at (775) 982-5545.

HEALING ARTS

Studies show that the arts add immeasurably to the quality of a patient's hospital stay by helping to create a nurturing, calming atmosphere. This philosophy recognizes that patients have more than physical needs, but also emotional, mental and spiritual needs. Researchers have found that the partnership between the humanities and healthcare can:

- Induce positive physiological and psychological changes in clinical outcomes
- Reduce drug consumption
- Shorten the length of stay in a hospital
- Increase job satisfaction
- Promote better doctor-patient relationships
- Improve mental healthcare
- Develop health practitioners' empathy across gender and cultural diversity

(Arts in Health: A Review of the Medical Literature, Dr. Rosalia Lelchuk Staricoff)

Renown Health has focused on the importance of the arts in the healing process since the early 1990's with the creation of our Healing Arts Program. The program has brought music to the patients' bedside, arranged local art exhibits in the hospital hallways, and through a partnership with the Nevada Museum of Art organized an Artists in Residence program, which led to the publication The Harvest of Lesser Burdens, Art in the Fields of Medicine.

With the opening of the new Tahoe Tower, Renown Health will reaffirm its commitment to the Healing Arts. From the private patient rooms to the family lounges, every amenity and detail in the Tahoe Tower will support the health and comfort of Renown's patients, visitors, and employees. An important aspect of the vision for the Tahoe Tower is the inclusion of art in the patient rooms and the public areas, a healing garden, and an expanded performing arts program. Renown Health is creating a Healing Arts Program comparable to those found primarily in larger urban settings. Look for the art in the new Tahoe Tower to be featured on www.renown.org/art.